



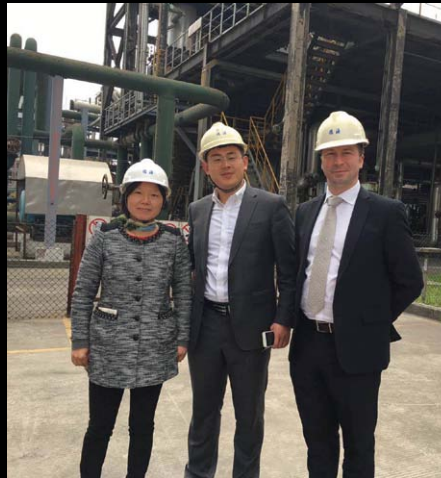
DESTEC ENGINEERING LTD

Destec is synonymous with innovation engineering high quality connectors for the oil & gas industry. Destec has been in business for over 46 years and still a family owned company run by the Director Mr. Barry Porter.

The engineers at Destec are coming up with new ideas for the subsea connections as the market becomes more innovated and complicated. The first GSB Single bolt clamp that Destec sold into the market was in 1984 and still to this day it is in Service in the North Sea, this shows the quality that Destec achieves. All of the products are fully traceable, manufactured and inspected at Destec's Factory in Lincoln, Lincolnshire, this gives Destec a greater control over the products that it produces, and with our major customers like ExxonMobil, BP, Shell, Onesubsea, Chevron & GE only the best will do! Destec has a very well skilled workforce with most of the staff working at Destec for 25 years on average, but soon Destec will need more staff to cope with the foreseeable work.

This year has been good so far for Destec even with the uncertainty of the oil industry and not knowing when it will recover, with new product & onsite machining contracts with chemical companies in the UK & Asia, also extending the pricing agreement with one of their biggest clients for the next 5 years.

Below: Global Sales & Marketing Manager Mark Lamyman, overseeing the planned turnaround work at the Techno Chemical plant in China.

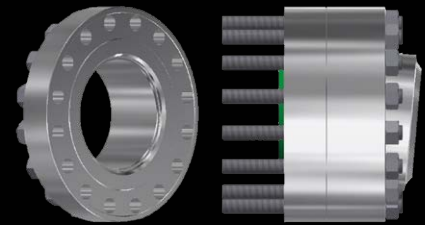


The Destec onsite service team has just completed the 6 week turnaround work on the Milazzo Refinery in Sicily, which has consisted in the inspection, machining, ndt & assembly of the G range 4 bolt clamps which is used on all the high pressure valves and pipe work throughout the site. Mark Lamyman from Destec is very pleased with how the job went with no leaks and a very satisfied customer. Also later this year the service team will be working in the Norwegian & Australia offshore sectors as well as the U.K power generation industry.



www.destec.co.uk

Destec have now designed & manufactured a Misalignment compact flange with sizes available from 4' 1500lb to 24' 1500lb and will mate to the standard Desflex compact flange. This product is used where there is a misalignment in the pipeline, and is also a swivel flange for bolt misalignment. Destec knows there is a market for this product and hope that it will take off like their other connector products.



Above: Destec Misalignment Ball Flange Connector.

Below: Destec Inspector onsite at Milazzo Refinery.

